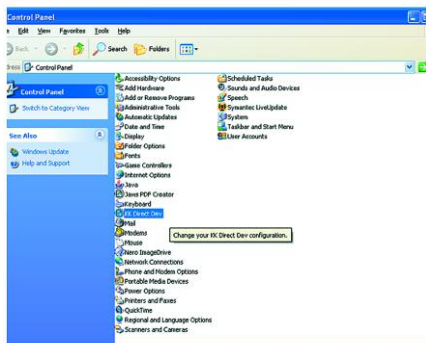


Font Management

Using the Kwik Kopy Direct Printer Control Panel

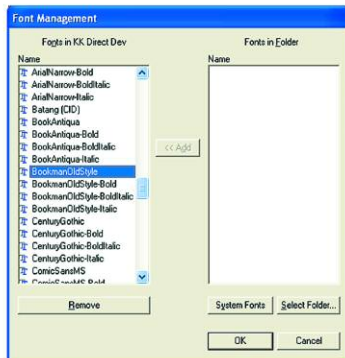
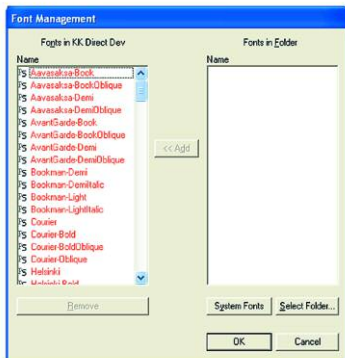
If you go to the Control Panel on your PC you will notice there is a Control Panel for the "Kwik Kopy Direct PDF Creator". Double click on this and it will bring up the "Configure Kwik Kopy Direct PDF Courier" panel. This can be used for managing fonts on your PC.



Select the Optimal configuration and click on "Font Management".

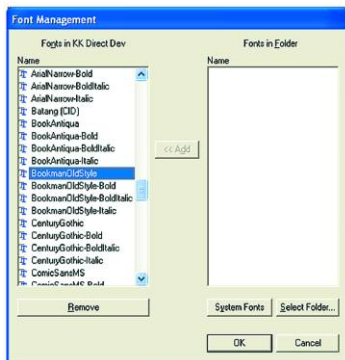


This can be used to add and remove corrupt or conflicting fonts. You will not be able to remove any system fonts. Click on "System Fonts" to add these to the list. Scroll through the list, find the corrupt font, highlight it and click "Remove". This is only to be used if you are having font issues you cannot resolve any other way.

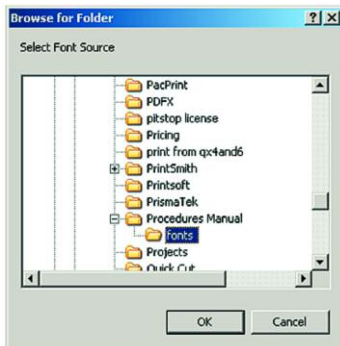


Font Management - continued

To add fonts to the list, click on "Select Folder".



Next you need to navigate to the Font Folder from which you want to add Fonts. Click on the folder labelled "Fonts" and click OK.



The fonts will be added to the right hand column. You need to highlight all the fonts and click "Add" to add them to the list for embedding.

